

WELCOME TO 4TH GRADE CURRICULUM NIGHT

PITTSFIELD ELEMENTARY SCHOOL

-Ms. Froning and Mrs. Bear



CURRICULUM NIGHT AGENDA



TEACHER INTRODUCTIONS



LEARNING TARGETS



CLASSROOM MANAGEMENT & ONLINE LEARNING



DAILY SCHEDULE



GRADE LEVEL CURRICULUM & STANDARDS



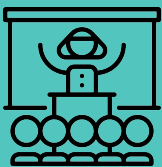
KEY WORDS



CLOSING



QUESTIONS



MEET YOUR PTO AND ADMINISTRATION!

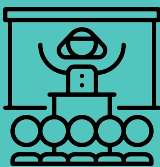
Pittsfield PTO

- Co-Presidents:
 - Kelly Pfeifer,
kpfeifer@gmail.com



- Karen Huselbus,
kostafin@gmail.com





MEET YOUR TEACHERS!



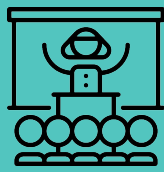
English



Espanol



- **Name:** Ms. Froning
- **Where I'm Teaching from:** My Childhood Home! 2nd year at Pittsfield, 1st year teaching Elementary, 5th year in education.
- **Loves:** Playing outside, Yoga, Cooking and Eating
- **Likes:** Reading, Traveling, Knitting
- **Dislikes:** Sitting Down for too long, tummy aches



MEET YOUR TEACHERS!



- **Name:** Mrs. Bear
- 13 years teaching at Pittsfield!
- **Loves:** Family (Husband Phil, Daughters Laura (24) and Sarah (22), cat Bomber)
- **Likes:** Reading, Gardening, Baking, Long Walks for Exercise
- **Dislikes:** Coronavirus, big creepy bugs, especially centipedes!

CURRICULUM NIGHT AGENDA



~~TEACHER INTRODUCTIONS~~



LEARNING TARGETS



CLASSROOM MANAGEMENT & ONLINE LEARNING EXPECTATIONS



DAILY SCHEDULE



GRADE LEVEL CURRICULUM & STANDARDS



KEY WORDS



CLOSING



QUESTIONS

CURRICULUM NIGHT AGENDA



~~TEACHER INTRODUCTIONS~~



LEARNING TARGETS



CLASSROOM MANAGEMENT & ONLINE LEARNING EXPECTATIONS



DAILY SCHEDULE



GRADE LEVEL CURRICULUM & STANDARDS



KEY WORDS



CLOSING



QUESTIONS



LEARNING GOALS



I Know more about my child's teacher.



I Know the classroom curriculum for 4th grade.



I Know what a typical online classroom day looks like for my child.

CURRICULUM NIGHT AGENDA



~~TEACHER INTRODUCTIONS~~



~~LEARNING TARGETS~~



CLASSROOM MANAGEMENT & ONLINE LEARNING EXPECTATIONS



DAILY SCHEDULE



GRADE LEVEL CURRICULUM & STANDARDS



KEY WORDS



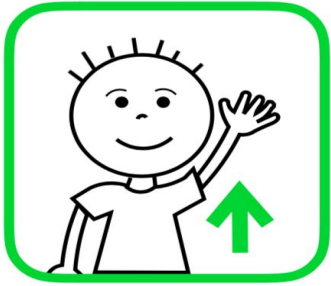
CLOSING



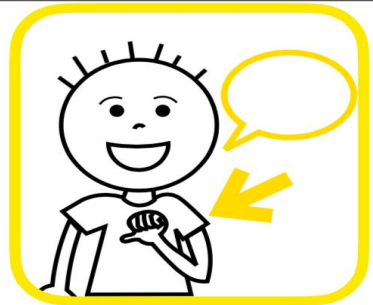
QUESTIONS



OUR DAILY ONLINE LEARNING EXPECTATIONS



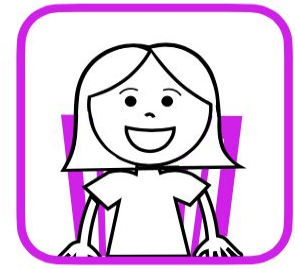
I can **RAISE MY HAND**
if I want to talk.



When I am called on, it
is my turn



I will **LISTEN** when it is
someone else's turn.



I will stay in **ONE SPOT** unless the
directions are to get up or move.



UNMUTE



MUTE

CURRICULUM NIGHT AGENDA



~~TEACHER INTRODUCTIONS~~



~~LEARNING TARGETS~~



~~CLASSROOM MANAGEMENT & ONLINE LEARNING EXPECTATIONS~~



DAILY SCHEDULE



GRADE LEVEL CURRICULUM & STANDARDS



KEY WORDS


























CLOSING
















QUESTIONS

EXAMPLE OF WEEKLY CLASSROOM SCHEDULE-AM

Monday	Tuesday	Wednesday	Thursday	Friday
Morning Meeting  8:10-8:40am	Morning Meeting  8:10-8:40am	Morning Meeting  8:10-8:40am	Morning Meeting  8:10-8:40am	Morning Meeting  8:10-8:40am
Library  9:10-9:40am	Music  9:10-9:40am	 Independent Work Time	PE  9:10-9:40am	Art  9:10-9:40am
Math  9:40-11:10am (includes a break and independent work time)	World Language  9:40-10:10am Math  10:10-11:10am (includes a break and independent work time)		Math  9:40-11:10am (includes a break and independent work time)	Math  9:40-11:10am (includes a break and independent work time)
PLTW  11:10-11:40am	PLTW  11:10-11:40am		PLTW  11:10-11:40am	PLTW  11:10-11:40am
Lunch  11:40-12:28	Lunch  11:40-12:28		Lunch  11:40-12:28	Lunch  11:40-12:28

EXAMPLE OF WEEKLY CLASSROOM SCHEDULE- PM

Monday	Tuesday	Wednesday	Thursday	Friday
ELA  12:28-1:30pm	ELA  12:28-1:30pm	 Independent Work Time	ELA  12:28-1:30pm	ELA  12:28-1:30pm
Independent Work Time (Includes WTW and a break)  1:30-2:40pm	Independent Work Time (Includes WTW and a break)  1:30-2:40pm		Independent Work Time (Includes WTW and a break)  1:30-2:40pm	Independent Work Time (Includes WTW and a break)  1:30-2:40pm
Closing Circle  2:40-3:00pm	Closing Circle  2:40-3:00pm		Closing Circle  2:40-3:00pm	Closing Circle  2:40-3:00pm

CURRICULUM NIGHT AGENDA



~~TEACHER INTRODUCTIONS~~



~~LEARNING TARGETS~~



~~CLASSROOM MANAGEMENT & ONLINE LEARNING EXPECTATIONS~~



~~DAILY SCHEDULE~~



GRADE LEVEL CURRICULUM & STANDARDS



KEY WORDS



CLOSING



QUESTIONS

CURRICULUM NIGHT AGENDA



~~TEACHER INTRODUCTIONS~~



~~LEARNING TARGETS~~



~~CLASSROOM MANAGEMENT & ONLINE LEARNING EXPECTATIONS~~



~~DAILY SCHEDULE~~



GRADE LEVEL CURRICULUM & STANDARDS



KEY WORDS



CLOSING



QUESTIONS

(ELA) READING WORKSHOP



We will learn about these 4th Grade Maisa Reading Units:

- ★ Launching Strong Reading Habits
- ★ Analyzing Characters
- ★ Informational Reading
- ★ Interpretive and Analytic Reading
- ★ Historical Fiction

(ELA) WRITING WORKSHOP



We will learn about these 4th Grade Maisa Writing Units:

- ★ Launching Writing
- ★ Writing Realistic Fiction
- ★ Informational Research Writing
- ★ Persuasive Writing



- ★ Project Lead the Way: Energy: Collisions and Conversions
- ★ Phenomenal Science: Surf's Up
- ★ Phenomenal Science: Big Blue Marble



Foundations Social Studies Units:

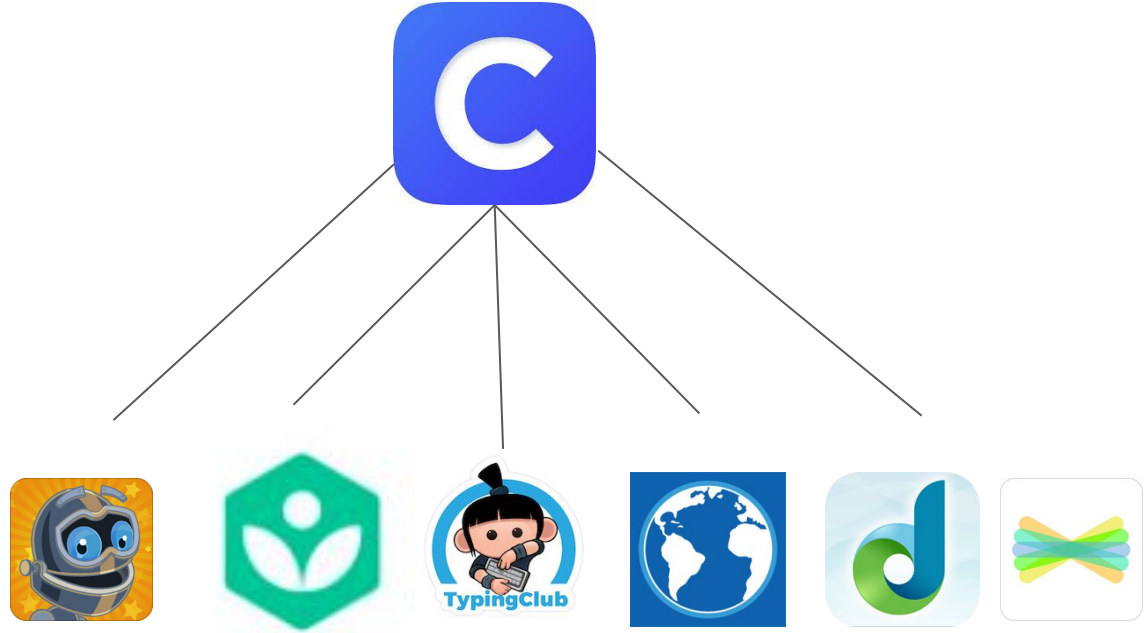
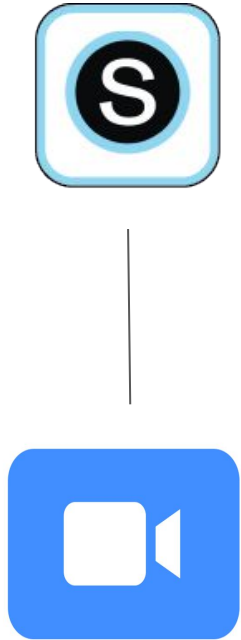
- ★ Rights & Responsibilities
- ★ Federal Government
- ★ Spatial Terms
- ★ Geography
- ★ Exploring Economics



Everyday Math Units:

- ★ Place Value: Multidigit Addition and Subtraction
- ★ Multiplication and Geometry
- ★ Fractions and Decimals
- ★ Multidigit Multiplication
- ★ Fractions and Measurement
- ★ Division, Angles
- ★ Fraction Operations and Application

STUDENT TECHNOLOGY



CURRICULUM NIGHT AGENDA



~~TEACHER INTRODUCTIONS~~



~~LEARNING TARGETS~~



~~CLASSROOM MANAGEMENT & ONLINE LEARNING EXPECTATIONS~~



~~DAILY SCHEDULE~~



~~GRADE LEVEL CURRICULUM & STANDARDS~~



KEY WORDS



CLOSING



QUESTIONS

VOCABULARY



Synchronous

Teachers will provide live instruction to their students.



VOCABULARY



Asynchronous

Students will work on classroom assignments independently on their own.



**Monday, Tuesday,
Thursday, Friday
1:30-3 p.m.**

All day Wednesday





▼ Course Options

Materials

Updates

Gradebook

Grade Setup

Mastery

Badges

Attendance

Members

Analytics

Workload Planning

Conferences

Edpuzzle

Gale In Context: Biogra...

Elementary 4th Grade: Section 112

Wednesday, September 30

◀ Prev

Next ▶

Add Materials

Options



Wednesday 9/30 Math Menu



Wednesday, 9/30, Math Menu

MUST-DO

- Complete the following End of Unit 1 Assessments in Schoology:
 - Place Value
 - Adding and Subtracting
 - Yards, Feet, and Inches
 - Perimeter

MAY-DO

- Khan Academy

GAMES

- Dreambox

HELP/SUPPORT

- [Click here to schedule a 1 on 1 meeting with me!](#)

Slide 1

Google Slides



End of Unit 1 Assessment - Place Value

Due Friday, January 1, 2021 at 11:59 pm



End of Unit 1 Assessment - Adding & Subtracting

Due Friday, January 1, 2021 at 11:59 pm



Gale In Context: Oppo...

Gale In Context: Science

Gale In Context: World ...

Gale Literature Resour...

Noteflight Learn

PowerSchool

Access Code

K3CR-HJDV-47MDN

[Reset](#)

Information

Grading period

20-21 YR: 9/08/20 - 6/11/21



End of Unit 1 Assessment - Perimeter

Due Friday, January 1, 2021 at 11:59 pm



Wednesday 9/30 ELA Assignments



Wednesday, 9/30, ELA Menu

- MUST-DO**
 - ☐ Listen to [Read Aloud](#)
 - ☐ Schoology Reading Response
 - ☐ 2 units in Lexia
- SHOULD-DO**
 - ☐ Read for at least 20 minutes
 - ☐ Write for at least 20 minutes
- CAN - DO**
 - ☐ Write a letter to your favorite author
 - ☐ Create a poster about your favorite book and share it with someone who might like that book.
- HELP/SUPPORT**
 - ☐ [Click here to schedule a 1 on 1 meeting with me!](#)



Wednesday 9/30: Reading Response - INDEPENDENT



After listening to the read aloud, share some of your reading thoughts. You can share your thinking by:

1. typing your answer
2. writing it and taking a picture of your page.
3. making a ...

Due Friday, January 1, 2021 at 11:59 pm

CURRICULUM NIGHT AGENDA



~~TEACHER INTRODUCTIONS~~



~~LEARNING TARGETS~~



~~CLASSROOM MANAGEMENT & ONLINE LEARNING EXPECTATIONS~~



~~DAILY SCHEDULE~~



~~GRADE LEVEL CURRICULUM & STANDARDS~~



~~KEY WORDS~~



CLOSING



QUESTIONS

CLOSING



Thank you for joining us!



CURRICULUM NIGHT AGENDA



~~TEACHER INTRODUCTIONS~~



~~LEARNING TARGETS~~



~~CLASSROOM MANAGEMENT & ONLINE LEARNING EXPECTATIONS~~



~~DAILY SCHEDULE~~



~~GRADE LEVEL CURRICULUM & STANDARDS~~



~~KEY WORDS~~



~~CLOSING~~



QUESTIONS



QUESTIONS

What questions
do you have?



[Family Teacher Conference Sign Up](#)